

DAILY LIFE IN ANCIENT EGYPT

Here's what we used...

SCENEARAMA® Items

- Desert Oasis Diorama Kit
- Building & Structure Kit
- Scene Setters: Egyptian Culture
- Small Project Base & Backdrop

Household Items

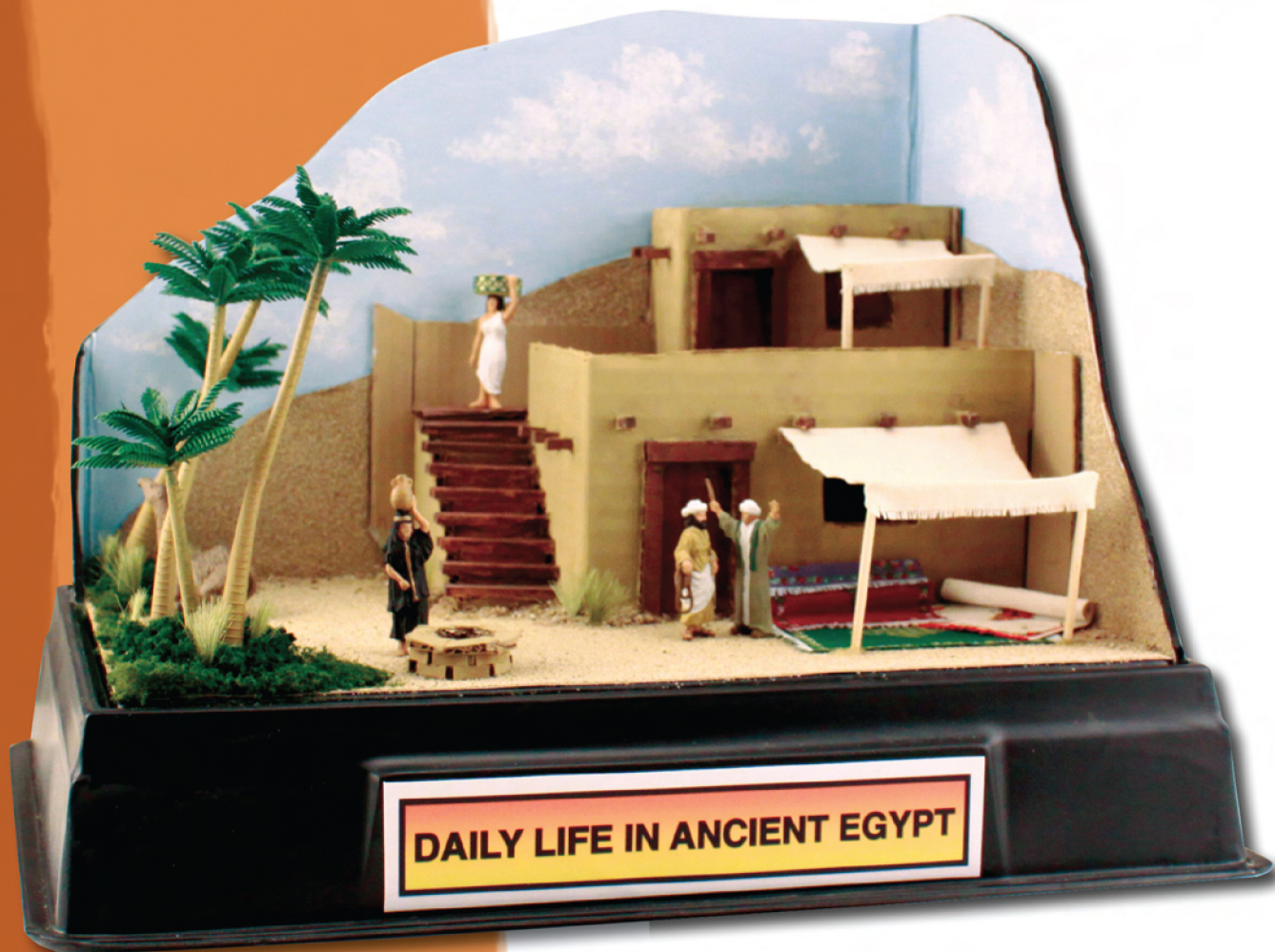
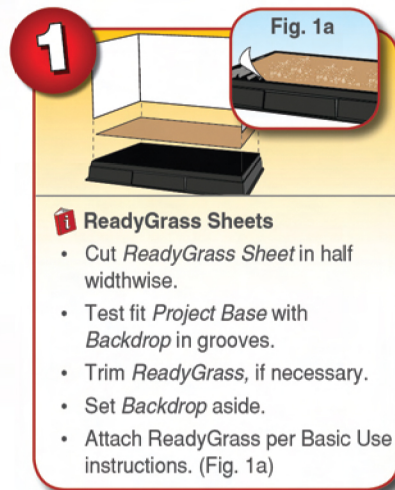
- Craft Paints and Brushes
- Cutting Surface
- Disposable Cup
- Hobby Knife
- Scissors
- Sponge (small piece)

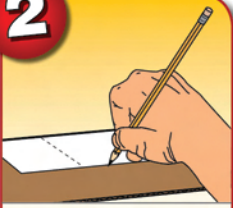
Did you know?

Most ancient Egyptian homes no longer exist. While massive stones were used for pyramids, homes were built with mudbricks. Over time, the mudbricks deteriorated and eventually crumbled away. Mudbricks were a mixture of mud, straw and pebbles. The mud mixture was poured into molds and dried in the sun for several days.

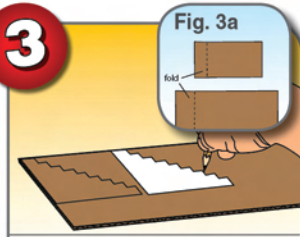
Fun Fact!

It was common for Egyptian villagers to spend a lot of time outdoors, including sleeping, cooking and eating on their flat-top roofs.

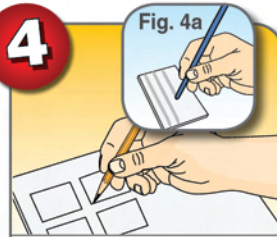


2
i Buildings & Structures

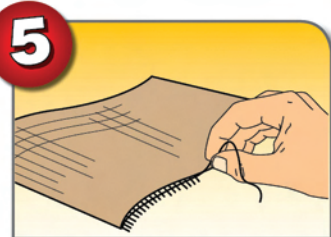
- Design a structure for your diorama.
- Create a template from scrap paper and test fit on *Project Base*.

3

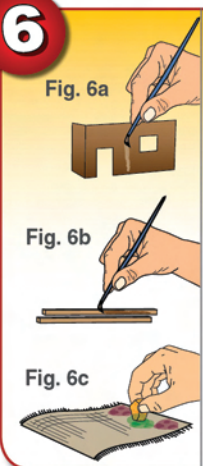
- Trace wall and stair templates on *Ribbed Board*.
- Create front and side walls from a single piece of *Ribbed Board*. (Fig. 3a)
- Cut out with a hobby knife.

4

- Draw roof, windows and doors on *Project Board* and cut out with a hobby knife.
- Score lines on windows and doors lengthwise, with blunt end of a paintbrush. (Fig. 4a)

5

- Create rugs and awning fabric from *Project Cloth*.
- Pull a few threads from end of *Cloth* to create a frayed look.

6
i Paint

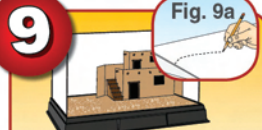
- Paint structure with craft paints. (Fig. 6a)
- Paint *Project Sticks* for stair steps, wood beams and awning poles. (Fig. 6b) Cut *Sticks* with a hobby knife.
- Paint rugs. Use a tiny piece of household sponge to paint flower design. (Fig. 6c)

7

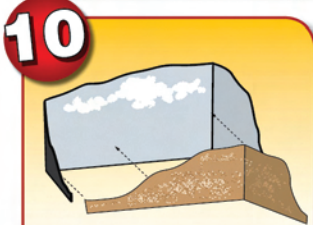
- For each stair step, cut out two *Project Sticks* to desired length and glue side-by-side.
- Glue in place between two stair cutouts. (Fig. 7a)

8

- Using *Project Glue*, assemble structure.
- NOTE:** *Project Glue* dries clear and matte.

9
i Project Base & Backdrop

- Test fit structure on *Project Base* with *Backdrop* in groves.
- Trace around structure and set structure aside.
- Design a *Backdrop*. (Fig. 9a)
- Cut out *Backdrop* with a hobby knife.

10
i Paint

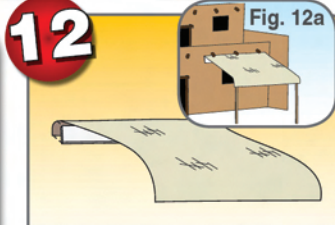
- Paint *Backdrop* with craft paints.

TIP! Incorporate leftover *ReadyGrass* in *Backdrop* design to create the illusion of depth.

11

- Using *Project Glue*, attach *Backdrop* to *Project Base*.
- Glue structure in place.

NOTE: Make sure the label area is facing forward.

12

- Cut a strip of *Project Board* and glue to end of awning fabric.
- Glue to structure. (Fig. 12a)
- Attach awning poles (*Project Sticks*) with *Project Glue*.

13

- Glue rugs in desired locations.
- TIP!** For rolled rugs, use *Project Glue* to hold in place.

14
i Plant Trees

- Bend *Palm Tree* trunks for a natural look.
- Plant in desired locations.

TIP! To paint *Palms*, add a small amount of *Project Glue* to tempera paint or use acrylic paint.

15
i Diluted Mixtures and Ground Cover

- Using included landscape materials, (*Foliage Fiber*, *Green Grass*, *Yellow Flowers*, *Talus* and *Wild Grass*), landscape diorama per Basic Use instructions.

16
i Labels

- Label and add signage to your project.
- Use *Project Glue* to attach *Scene Setters*.

TIP! Personalize your diorama by adding unique details. We added a fountain!