

# MEDUSA

Here's what we used...

## SCENEARAMA® Items

- Sculpting Kit
- Plaster Cloth
- Small Project Base & Backdrop

## Household Items

- Corrugated Cardboard, 7" x 10"
- Cutting Surface
- Disposable Cup
- Foam Core Board, 8" x 10"
- Hobby Knife
- Masking Tape
- Newspaper
- Pan for Water
- Pencil
- Pipe Cleaners
- Plastic Wrap
- Ruler
- Scissors

## Did you know?

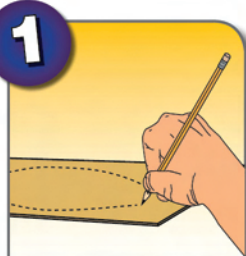
Greek mythology tells the story of Medusa, a beautiful woman who angered the goddess Athena. Athena turned Medusa into a monster, transforming her hair into a head of snakes. One glance at Medusa would turn a person to stone. Later, she was beheaded by Perseus, who gave her head to Athena to place on her shield.

*Mythical*

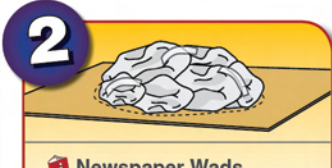
## Fun Fact!

After Medusa was beheaded, Pegasus, a winged horse and her son by Poseidon, sprang from her blood.





- Measure and cut a cardboard pad approx. 7" x 10".
- Draw outline of Medusa's head on cardboard pad.



### **i** Newspaper Wads

- Place newspaper wads inside drawn outline and tape to hold.
- Tape newspaper wads together and to the cardboard pad.

**NOTE:** The height of the newspaper wads will determine depth of Mask.



### **i** Sculpt

- Use *Sculpting Clay* to create nose, eyebrows and lips. Let dry.
- Glue or tape in place on mask.
- Cover mask loosely in plastic wrap and tape to cardboard.

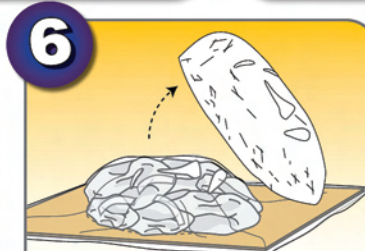


### **i** Plaster Cloth

- Fold 3" strip of wet *Plaster Cloth* in half (bumpy side out).
- Wrap around base of mask, folded edge next to cardboard pad.
- Smooth each strip with wet fingers to fill holes in *Cloth*.



- Cover rest of mask with wet *Plaster Cloth* (3" strips), bumpy side up.
- Smooth each strip with wet fingers to fill holes in *Cloth*.
- Tuck *Plaster Cloth* around eyebrows, lips, etc. to show contours.
- Apply 2 layers of *Plaster Cloth*.



- Allow to set overnight or until hardened.
- Carefully remove mask from cardboard pad.
- Discard cardboard pad, plastic wrap, newspaper wads and *Sculpting Clay*.



- Add an additional layer of wet *Plaster Cloth* around edge of mask.
- Allow to set until hardened (approx. 30 minutes).



Fig. 8a

- Cut desired amount of pipe cleaners (snakes) in half.
- Starting 1" from top of pipe cleaner, wrap in wet *Plaster Cloth* strips and smooth with wet fingers.
- Bend pipe cleaner into snake-like shapes. (Fig. 8a)
- Pinch *Plaster Cloth* to form snake head. Add additional *Plaster Cloth*, if necessary.
- Attach snake to mask (see Step 9). Repeat for desired number of snakes.



Fig. 9a

- To attach snakes on mask, place snake on mask, then smooth a piece of wet *Plaster Cloth* over the end of pipe cleaner. Hold until setting begins.
- Use blunt end of the sculpting tool to shape eyes. Pull a few threads from *Cloth* to make a tongue. (Fig. 9a)
- Prop up snakes to hold shape while drying.
- Allow to set overnight or until hardened.



### **i** Paint

- Before painting, draw desired design on mask with a pencil.
- Paint your mask as desired.
- Let dry.



### **i** Project Base & Backdrop

- Design a *Backdrop* that best fits your Mask.
- Cut out with a hobby knife.
- Paint *Backdrop* as desired.



### **i** Easel Templates

- Create an easel for your Medusa mask.
- Cut out with a hobby knife.



### **i** Contact Gluing Method

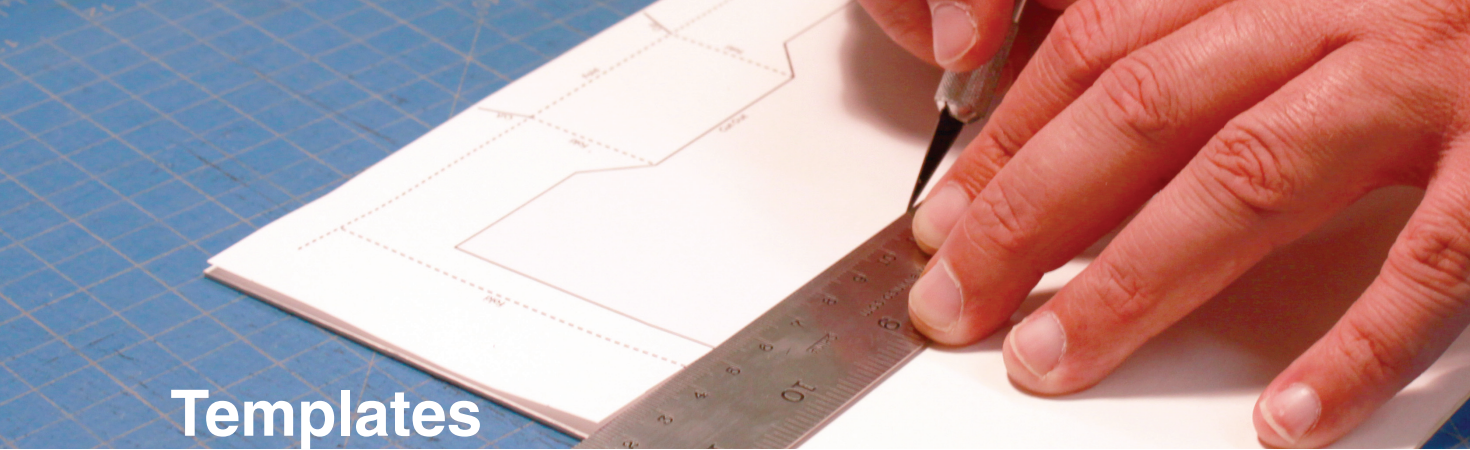
- Attach easel to *Project Base* with the contact gluing method.
- Let dry.
- Make sure label area on *Project Base* faces forward.



### **i** Labels

- Glue *Backdrop* to *Project Base*.
- Glue mask to easel.
- Label and add signage to your project.

**NOTE:** Rest mask on *Backdrop* for extra support.



# Templates

- Photocopy, trace or scan template onto white paper. Cut out, then trace onto specified material.
- If needed, reduce or enlarge templates to fit your diorama.
- Each template includes basic assembly instructions and needed materials.
- Read through the corresponding project instructions for clarification on using template.
- Short dotted lines ----- indicate fold lines
- Long dotted lines — — — indicate score lines
- Bold, solid lines ——— indicate cut lines

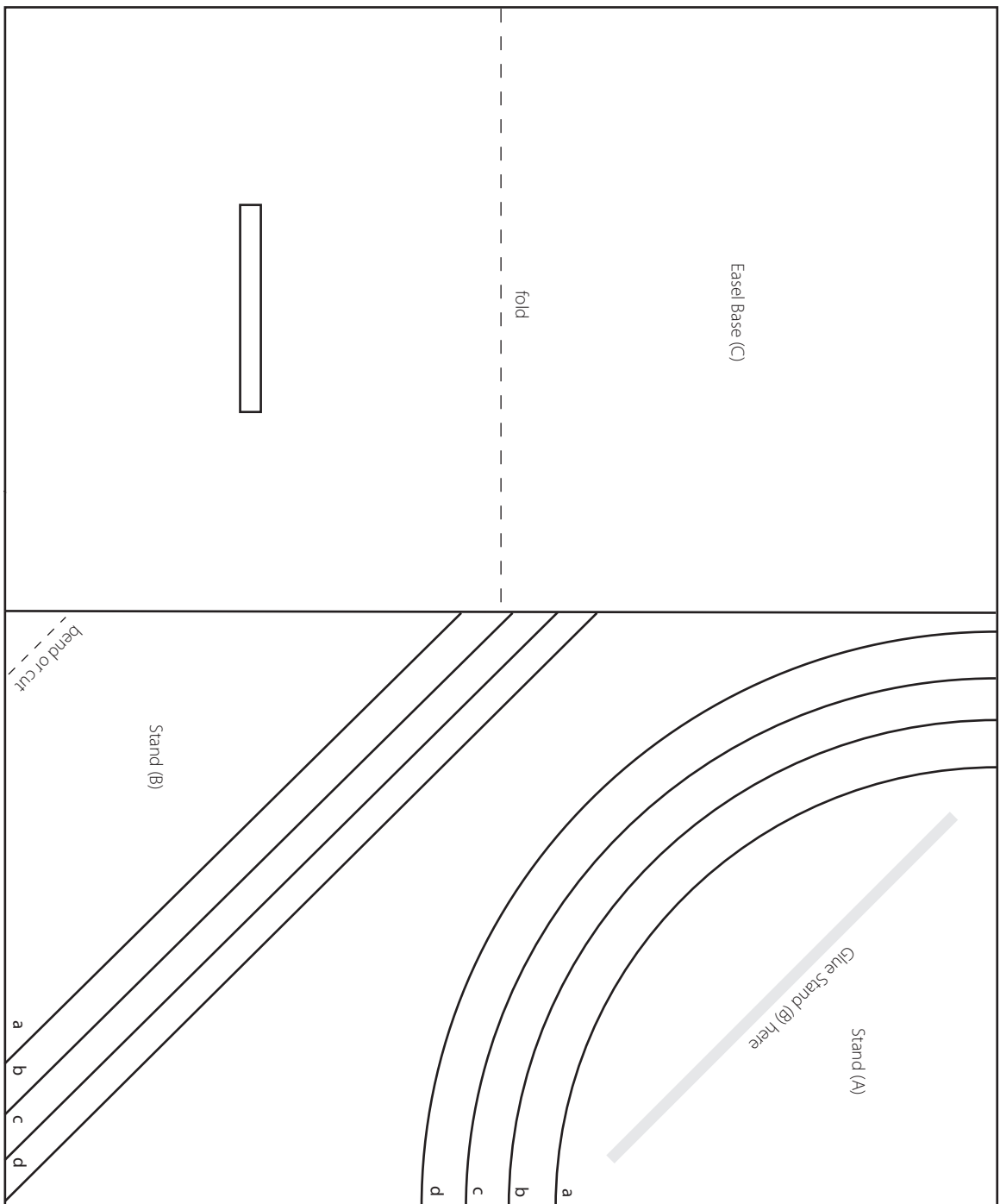
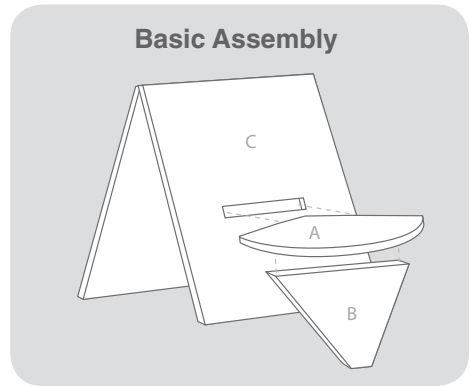
# Easel 1

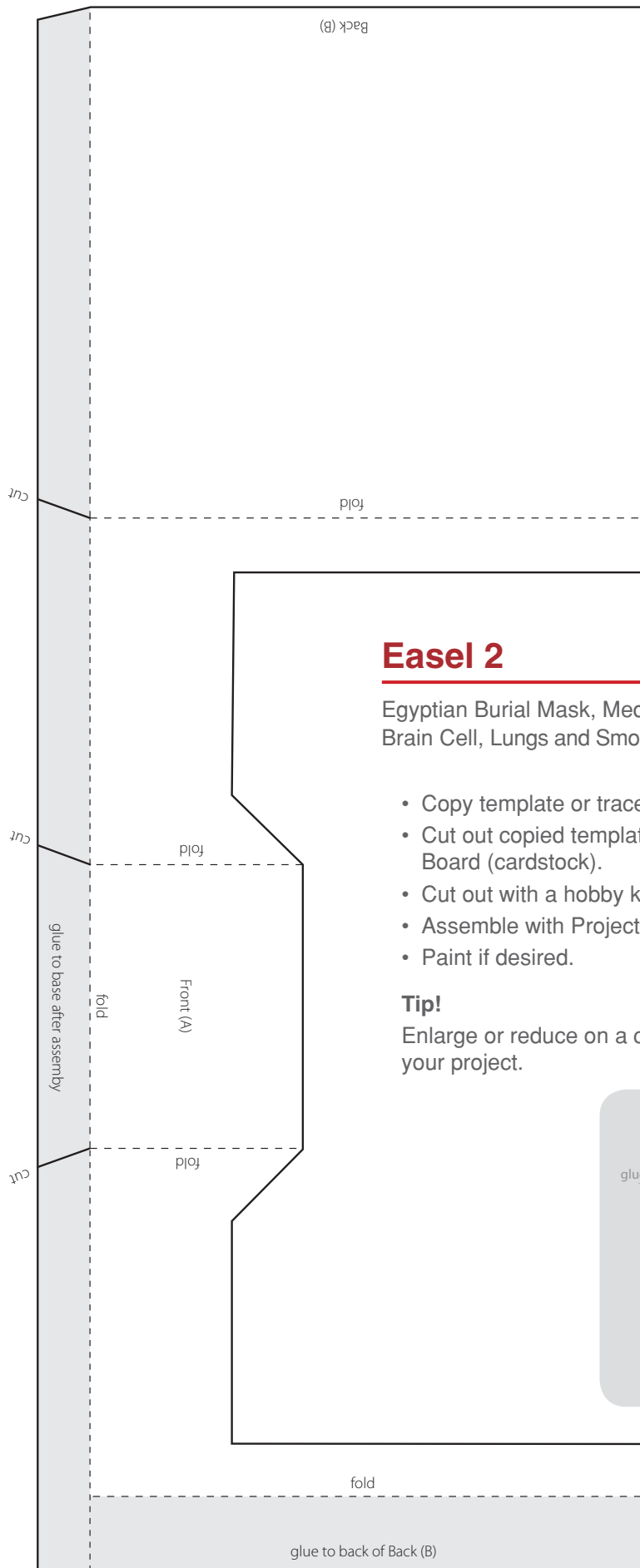
Egyptian Burial Mask, Medusa, Bacteria Cell, Brain Cell, Lungs and Smoking

- Copy template or trace on white paper.
- Cut out copied template and trace on foam core board, 1/8".
- Cut out with a hobby knife.
- Assemble with Project Glue.
- If using cardstock, make size adjustments.

## Tip!

Choose the size stand that best fits your project. (a=smallest, d=largest)





## Easel 2

Egyptian Burial Mask, Medusa, Bacteria Cell, Brain Cell, Lungs and Smoking

- Copy template or trace on white paper.
- Cut out copied template and trace on Construction Board (cardstock).
- Cut out with a hobby knife.
- Assemble with Project Glue.
- Paint if desired.

### Tip!

Enlarge or reduce on a copier to a size that best fits your project.

