



# TEPEE VILLAGE TEACHER GUIDE

Use this Classroom Pack for individual students or groups of students. See the complete line of Classroom Packs at your local educational supply store, hobby shop or online at [www.scenearama.com](http://www.scenearama.com).

**Before starting, here are some considerations for your classroom project:**

- This guide is written for making one large tepee. The tepee template can be modified to make two medium or three small tepees.
- To better understand this project and the time it takes to complete each session, try building your own Tepee Village first.
- The project is divided into four sessions, but modify it for your convenience. Sessions can be combined.
- This kit contains materials that may stain or dry on clothing. Have students bring old clothes or an apron to wear while completing the project.
- Students can extend the paint by dipping their paintbrush in water frequently.
- Students should have flat surfaces to work on. A workspace of approximately 2'x2' should be allotted for each village.
- Begin collecting newspaper for table coverings, twigs for trees, small pebbles for fire pits and any other items to use the week before starting the project.
- The project area should be covered ahead of time with newspapers or table covers (for easy cleanup).

**Here are some good ideas:**

- Watch the how-to video for this project at [www.scenearama.com](http://www.scenearama.com).
- This kit can be easily adapted for sharing supplies in larger groups working around one table.
- Ask some of your students' parents to volunteer to help during the project.
- Have the students read their guides first before doing their project, so they can see how the project will go together (each step of the Teacher Guide corresponds with the Student Guide).

After the project has ended, make copies of the Tepee Village Certificate (inside back cover) and fill in students' name. It gives them a reminder of the work they have accomplished and the lessons they have learned.

TEPEE VILLAGE KIT CONTENTS

12 Project Bases\*\* with Labels

Teacher and Student Guide with Tepee Template

Project Glue†

24 Plastic Cups  
12 Sifter Lids

3 Project Stick Bundles (24 per bundle)

12 Project Paints† (6 colors)

12 Paintbrushes (large)  
12 Paintbrushes (small)

12 Project Cloths

12 Green ReadyGrass Sheets

Dark Green Bushes\*    Dark Green Underbrush\*    Evergreen Coarse Accent

3 Green Foliage Fiber Pieces (4" x 9")

† Non-Toxic.  
\*Patent US-5215793, 5019431; GER-P69026621.9, UK-0496798 (Underbrush) \*\*Patent Pending (Base)

Conforms to Health Requirements of ASTM D4236  
Made in USA of US and Imported Parts

Kit contents are highlighted in text for easy identification.

ADDITIONAL SUPPLIES

- Water (approx. 6 cups per village)
- Scissors (one per village)
- Markers (for labeling)
- Paper Towel Rolls for cleanup (2)
- Table Covering (can be newspapers)
- Measuring Cup (1/4 cup)
- Measuring Spoon (1 tablespoon and 1 teaspoon)
- Pencil
- Small twigs and pebbles (for fire pit and logs)
- Disposable Cup with water (for rinsing Paintbrushes)



# MAKE TEPEE

Allow approximately 60 minutes.

## CONTENTS



- 6 Project Sticks



- 1 Project Cloth Sheet

## QUANTITIES PER VILLAGE



- 1 tsp Project Glue



- 1 Project Paint



- Paintbrushes (1 large, 1 small)



- 1 Plastic Cup

- 1 Tepee Template

## ADDITIONAL SUPPLIES

- Measuring Spoon (1 tbsp)
- Scissors (one per village)
- Disposable Cup with water (for rinsing Paintbrushes)
- Pencil

## PREP WORK

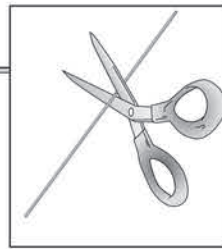
- Have students select how many tepees they want to make (one large, two medium or three small) and provide them with copies of the appropriate size templates. See **Tepee Template** for copy percentages.

- Dilute **Project Glue** (1 tbsp glue to 1 tbsp water) in a **Plastic Cup** (per village).
- Time is based on making one tepee. Allow more time for additional tepees.

## INSTRUCTIONS

### STEP 1

Tepee Pole Guide

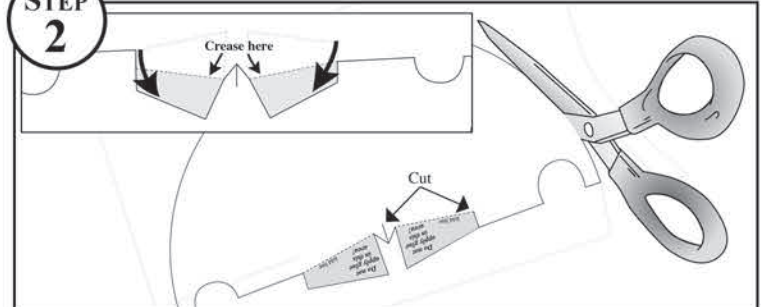


You will need six lodge poles per large tepee, four lodge poles per medium tepee and three lodge poles per small tepee

### STEP 2

Crease here

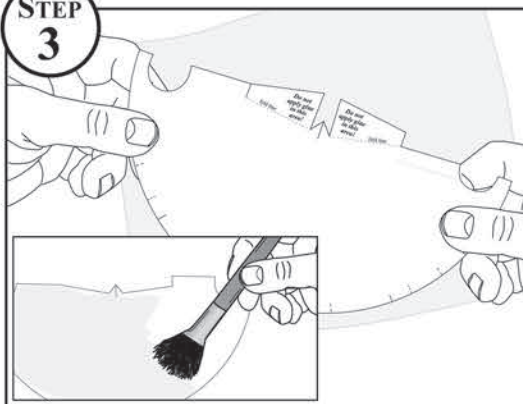
Cut



Using the **Template Pole Guide** (located on the **Tepee Template**) mark **Project Sticks** as shown. Using scissors, cut **Project Sticks** at marks. These will be lodge poles for the tepees. Paint the lodge poles, if desired. **NOTE:** you can get two medium or three small lodge poles from one **Project Stick**. Save any scraps and paint to use as logs for the fire pit.

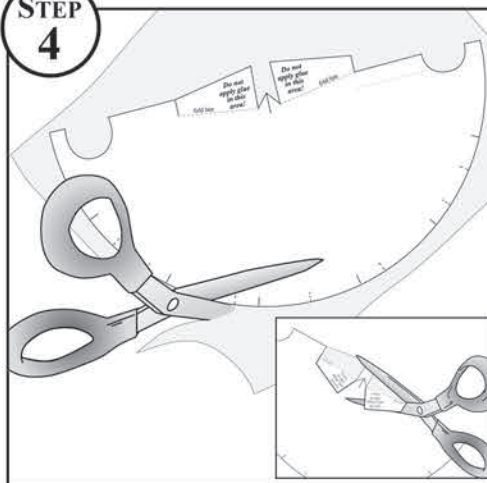
Cut along all of the solid lines of **Tepee Template**. Fold the tepee flaps at the fold line so no words are showing and crease (see inset).

### STEP 3



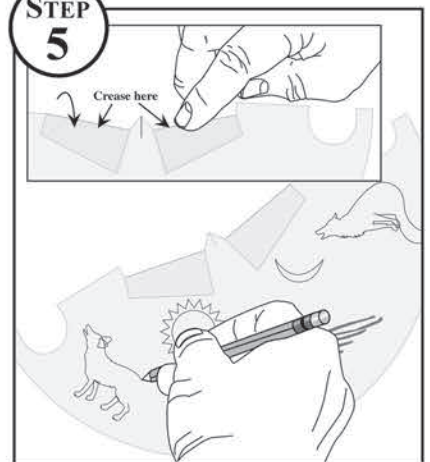
Turn **Tepee Template** over so no marks are showing. Make sure the tepee flaps are still folded so no glue will get on them. Apply a thin layer of diluted glue to template. Set aside. Lay **Project Cloth** down and smooth out. Place **Tepee Template**, glue side down, diagonally on cloth. Press and rub until the cloth and template lies smoothly. Rinse **Plastic Cup** and **Paintbrush**.

### STEP 4



Unfold the tepee flaps and cut cloth along solid lines of **Tepee Template**. When finished, cut off the paper flaps (along dotted lines).

### STEP 5



Turn whole project over (paper-side-down). Fold tepee flaps and crease with finger. Using a pencil, sketch images onto cloth, then paint. Rinse **Paintbrushes**. **NOTE:** Make sure curve is toward you with flaps at top, as shown in illustration.





# SESSION 2

## ASSEMBLE TEPEE

Allow approximately 60 minutes.

CONTENTS



- 1 tbsp Project Glue

### QUANTITIES PER VILLAGE



- Paintbrushes (1 large, 1 small)



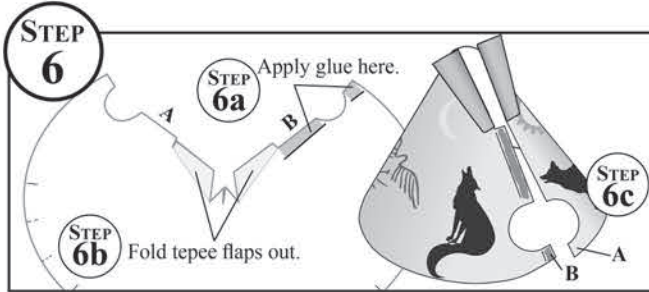
- 1 Plastic Cup

ADDITIONAL SUPPLIES

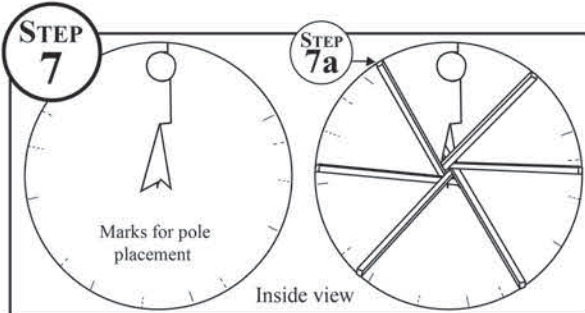
- Measuring Spoon (1 tbsp)
- Disposable Cup with water (for rinsing Paintbrushes)

**PREP WORK** • Put 1 tbsp of Project Glue in a Plastic Cup (per village)

### INSTRUCTIONS



Add a dab of glue where shown (Step 6a). Fold tepee flaps out (Step 6b) and then form into a tepee shape (with paper to the inside). Attach glued side B to side A as shown (Step 6c).



Brush glue on 2/3 of one lodge pole. Holding the tepee upside down, insert the pole through the top opening, unglued ends first. Starting at the door attach this pole using the small marks for placement. Make sure end of pole matches up with the edge of tepee (Step 7a). Working toward the other side, insert the rest of the poles in the same way. Repeat Steps 1-7 if making two or three tepees.



# SESSION 3

## LANDSCAPE

Allow approximately 60 minutes.

CONTENTS



- 1 Project Base

### QUANTITIES PER VILLAGE



- 1 tbsp Project Glue



- 1 Green ReadyGrass Sheet



- 1/4 cup Dark Green Bushes
- 2 tbsps Dark Green Underbrush



- 1 Paintbrush (large)
- 2 Plastic Cups

ADDITIONAL SUPPLIES

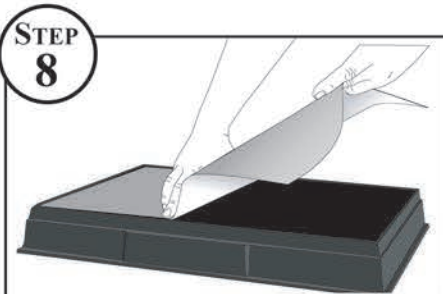
- Measuring Spoon (1 tbsp and 1 tsp)
- Measuring Cup (1/4 cup)
- Twigs and pebbles
- Disposable cup with water (for making paths)

### PREP WORK

• Dilute Project Glue (1 tbsp glue to 1 tbsp water) in a Plastic Cup (per village) for Step 8.

• Put 1 tsp of Project Glue in a Plastic Cup (per village) for Step 9 and 11.

### INSTRUCTIONS



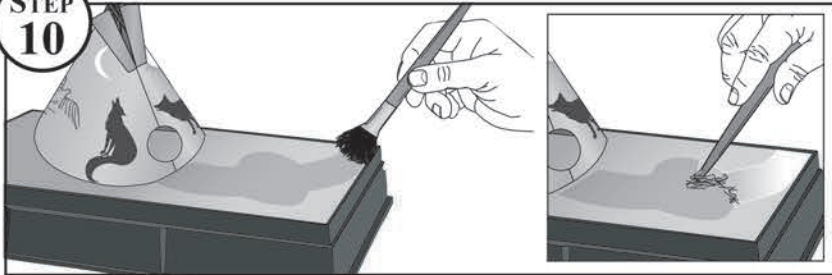
Brush diluted glue on top of Project Base. Wait until tacky (approx. 5 minutes), then lay the Green ReadyGrass Sheet on the Project Base (green side up) and press together.



Glue your finished tepee onto the Project Base with a small amount of Project Glue applied to the bottom of the tepee poles.



**STEP 10**



To make paths and fire pits, wet the area with the water and large **Paintbrush**, then scrape the area (with the handle of the **Paintbrush**) to remove the green grass. Put 1/4 cup of **Dark Green Bushes** in a **Plastic Cup** and 2 tbsps **Dark Green Underbrush** in the other **Plastic Cup** (per village).

**STEP 11**



Add bushes and underbrush to village by applying the remaining glue and press them into the glue. You can use small pebbles and twigs from outside, (or scrap **Project Sticks**) for the fire pit and logs. Rinse and dry **Paintbrush** and **Plastic Cups**.



## MAKE TREES

Allow approximately 60 minutes.

**CONTENTS**



- 1 Project Label
- 2 Plastic Cups and 1 Sifter Lid

### QUANTITIES PER VILLAGE



- 1 Paintbrush (large)
- 1/4 cup and 2 tbsps Evergreen Coarse Accent



- 2 tsp Project Glue



- 1/4 Green Foliage Fiber Piece

**ADDITIONAL SUPPLIES**

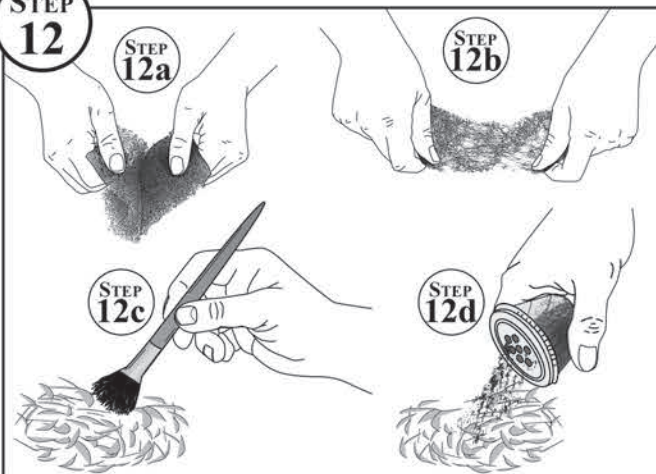
- Measuring Spoon (1 tbsp and 1 tsp)
- Measuring Cup (1/4 cup)
- Twigs
- Markers (for labels)
- Water (for cleanup)
- Scrap paper (for glue to plant trees)

### PREP WORK

- Cut **Green Foliage Fiber** into four equal parts.
- Dilute **Project Glue** (1 tsp glue to 3 tsp water) in a **Plastic Cup** (per village).
- Put 1 tsp of **Project Glue** on scrap paper (per village).
- Prepare twigs and sticks to make trees by trimming them to the appropriate size for the tepee village.

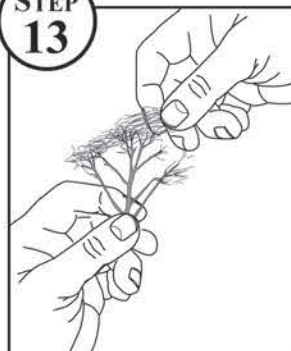
### INSTRUCTIONS

**STEP 12**



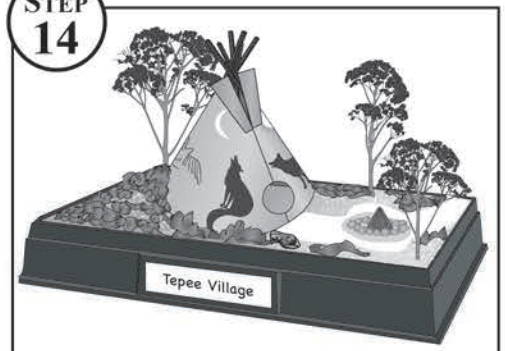
Separate the **Green Foliage Fiber** into eight thin layers (Step 12a). Stretch layers until thin and lacy (Step 12b). Dab diluted glue over stretched layers (Step 12c). Put 1/4 cup and 2 tbsps of **Evergreen Coarse Accent** into a **Plastic Cup**, attach **Sifter Lid** tightly, and sprinkle on top of stretched layers of **Green Foliage Fiber** (Step 12d).

**STEP 13**



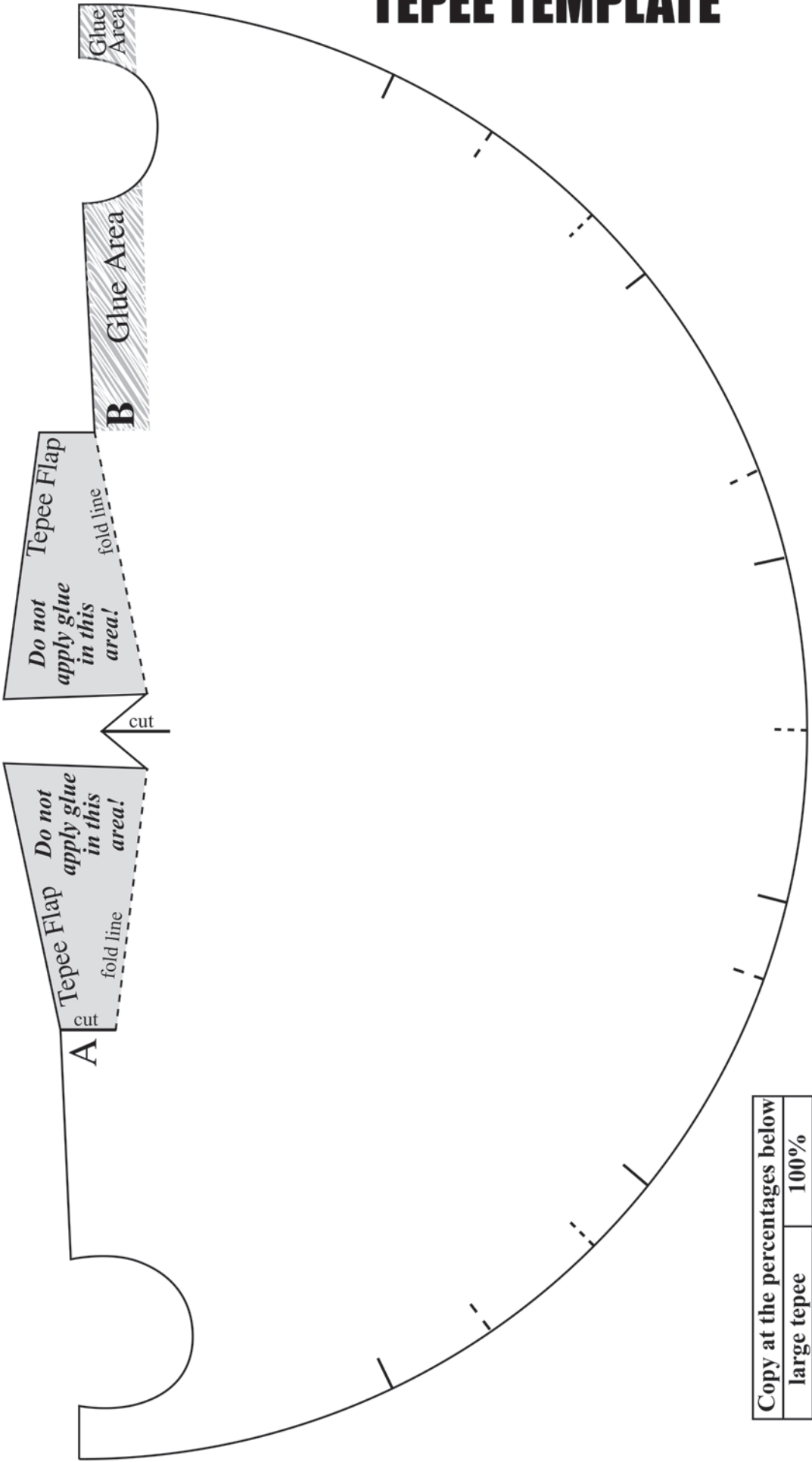
Spread prepared foliage over branches of twigs to make trees.

**STEP 14**



To plant trees, dip tree trunk in glue and place on diorama. Spread remaining **Green Foliage Fiber** and sprinkle **Evergreen Coarse Accent** on the ground for more bushes, vines and grass. **NOTE:** It may be necessary to poke a hole in **Project Base** to plant trees. Decorate **Project Label**, on shiny side with markers and attach it to the front of the **Project Base**.

# TEPEE TEMPLATE



Copy at the percentages below	
large tepee	100%
medium tepee	75%
small tepee	55%

**Small marks around base of tepee are for pole placement.**

- | = large tepee pole placement
- - = medium tepee pole placement
- . . . = small tepee pole placement

Tepee Pole Guide





# Scene-A-Rama Class Project

## CERTIFICATE OF COMPLETION

This is to certify that

\_\_\_\_\_ *Name of student*

completed the Scene-A-Rama classroom project

### TEPEE VILLAGE

on \_\_\_\_\_

*Date*

\_\_\_\_\_ *Teacher*

A division of Woodland Scenics®

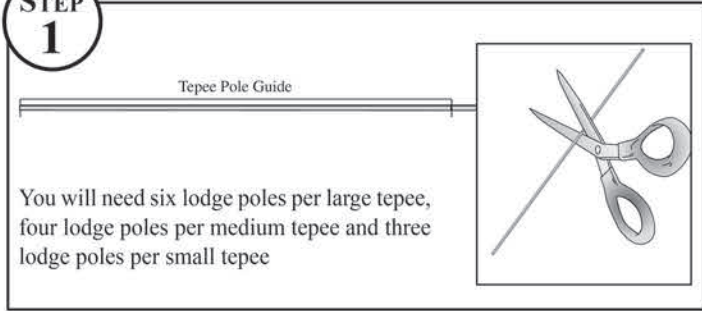
# SCENE A RAMA

DIORAMAS • SCHOOL PROJECTS • DISPLAYS

See the complete line of products and exciting how-to videos at [www.scenearama.com](http://www.scenearama.com).



**STEP 1**

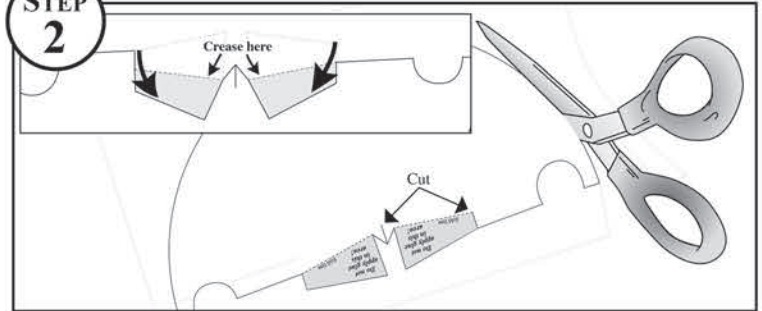


Tepee Pole Guide

You will need six lodge poles per large tepee, four lodge poles per medium tepee and three lodge poles per small tepee

Using the Template Pole Guide (located on the **Tepee Template**) mark **Project Sticks** as shown. Using scissors, cut **Project Sticks** at marks. These will be lodge poles for the tepees. Paint the lodge poles, if desired. **NOTE:** you can get two medium or three small lodge poles from one **Project Stick**. Save any scraps and paint to use as logs for the fire pit.

**STEP 2**

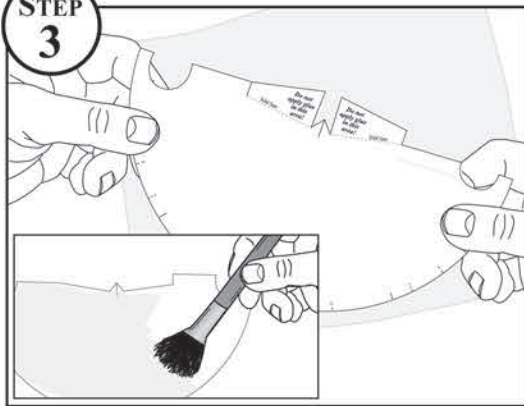


Crease here

Cut

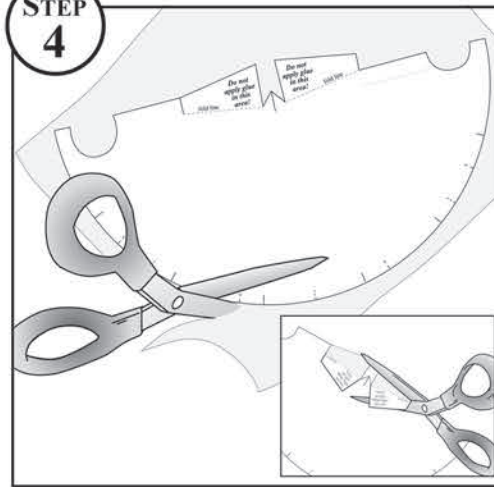
Cut along all of the solid lines of **Tepee Template**. Fold the tepee flaps at the fold line so no words are showing and crease (see inset).

**STEP 3**



Turn **Tepee Template** over so no marks are showing. Make sure the tepee flaps are still folded so no glue will get on them. Apply a thin layer of diluted glue to template. Set aside. Lay **Project Cloth** down and smooth out. Place **Tepee Template**, glue side down, diagonally on cloth. Press and rub until the cloth and template lies smoothly. Rinse **Plastic Cup** and **Paintbrush**.

**STEP 4**



Unfold the tepee flaps and cut cloth along solid lines of **Tepee Template**. When finished, cut off the paper flaps (along dotted lines).

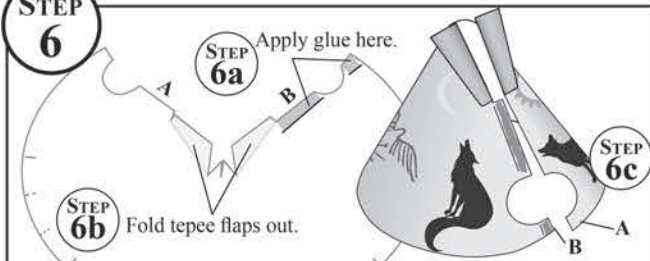
**STEP 5**



Crease here

Turn whole project over (paper-side-down). Fold tepee flaps and crease with finger. Using a pencil, sketch images onto cloth, then paint. Rinse **Paintbrushes**. **NOTE:** Make sure curve is toward you with flaps at top, as shown in illustration.

**STEP 6**



Apply glue here.

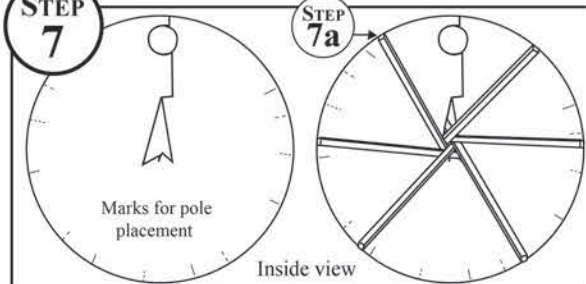
**STEP 6a**

**STEP 6b** Fold tepee flaps out.

**STEP 6c**

Add a dab of glue where shown (Step 6a). Fold tepee flaps out (Step 6b) and then form into a tepee shape (with paper to the inside). Attach glued side B to side A as shown (Step 6c).

**STEP 7**



Marks for pole placement

Inside view

**STEP 7a**

Brush glue on 2/3 of one lodge pole. Holding the tepee upside down, insert the pole through the top opening, unglued ends first. Starting at the door attach this pole using the small marks for placement. Make sure end of pole matches up with the edge of tepee (Step 7a). Working toward the other side, insert the rest of the poles in the same way. Repeat Steps 1-7 if making two or three tepees.

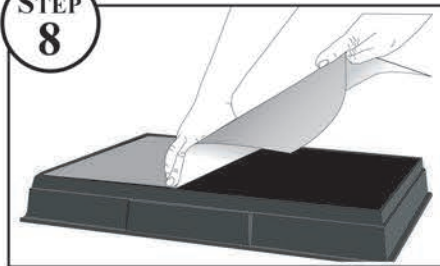
Brush glue on 2/3 of one lodge pole. Holding the tepee upside down, insert the pole through the top opening, unglued ends first. Starting at the door attach this pole using the small marks



# LANDSCAPE

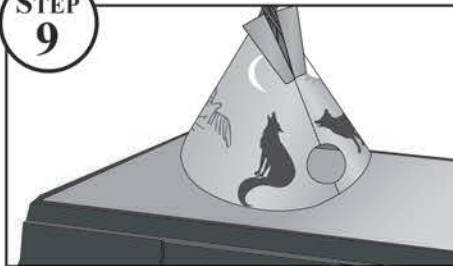
## SESSION 3

STEP 8



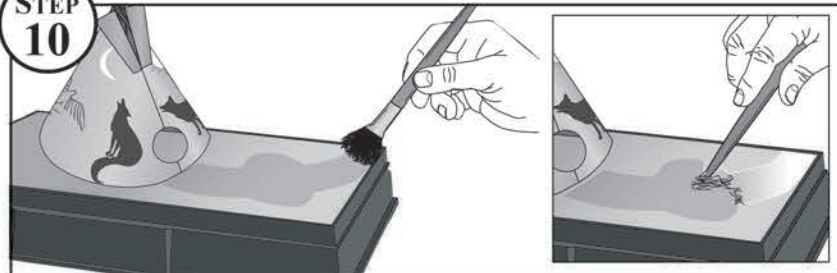
Brush diluted glue on top of **Project Base**. Wait until tacky (approx. 5 minutes), then lay the **Green ReadyGrass Sheet** on the **Project Base** (green side up) and press together.

STEP 9



Glue your finished tepee onto the **Project Base** with a small amount of **Project Glue** applied to the bottom of the tepee poles.

STEP 10



To make paths and fire pits, wet the area with the water and large **Paintbrush**, then scrape the area (with the handle of the **Paintbrush**) to remove the green grass. Put 1/4 cup of **Dark Green Bushes** in a **Plastic Cup** and 2 tbsps **Dark Green Underbrush** in the other **Plastic Cup**.

STEP 11

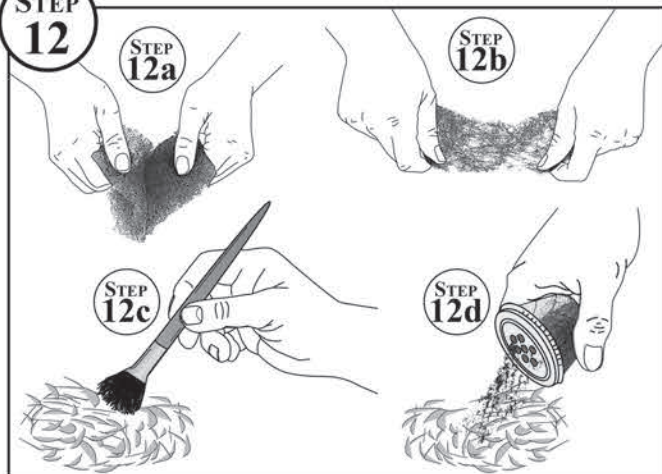


Add bushes and underbrush to village by applying the remaining glue and press them into the glue. You can use small pebbles and twigs from outside, (or scrap **Project Sticks**) for the fire pit and logs. Rinse and dry **Paintbrush** and **Plastic Cups**.

# MAKE TREES

## SESSION 4

STEP 12



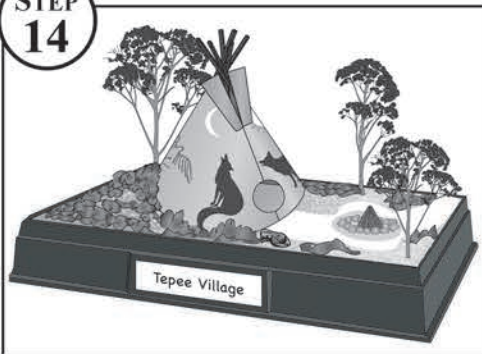
Separate the **Green Foliage Fiber** into eight thin layers (Step 12a). Stretch layers until thin and lacy (Step 12b). Dab diluted glue over stretched layers (Step 12c). Put 1/4 cup and 2 tbsps of **Evergreen Coarse Accent** into a **Plastic Cup**, attach **Sifter Lid** tightly, and sprinkle on top of stretched layers of **Green Foliage Fiber** (Step 12d).

STEP 13



Spread prepared foliage over branches of twigs to make trees.

STEP 14



To plant trees, dip tree trunk in glue and place on diorama. Spread remaining **Green Foliage Fiber** and sprinkle **Evergreen Coarse Accent** on the ground for more bushes, vines and grass. **NOTE:** It may be necessary to poke a hole in **Project Base** to plant trees. Decorate **Project Label**, on shiny side with markers and attach it to the front of the **Project Base**.