



# CREATIVE MASK TEACHER GUIDE

Use this Classroom Pack for individual students or groups of students. See the complete line of Classroom Packs at your local educational supply store, hobby shop or online at [www.scenearama.com](http://www.scenearama.com).

## *Before starting, here are some considerations for your classroom project:*

- To better understand this project and the time it takes to complete each session, try building your own Creative Mask first.
- The project is divided into three sessions, but modify it for your convenience. Sessions can be combined.
- This kit contains materials that may stain or dry on clothing. Have students bring old clothes or an apron to wear while completing the project.
- Students can extend the paint by dipping their **Paintbrush** in water frequently.
- Students should have flat surfaces to work on. A workspace of approximately 2'x2' should be allotted for each mask.
- Begin collecting newspapers the week before starting the project.
- For extra decorations, have students bring things from home that they can add to their masks (feathers, beads, ribbon, buttons, colored yarn, sequins, glitter, rhinestones, leather, etc.).
- The project area should be covered ahead of time with newspapers or table covers (for easy cleanup).

## *Here are some good ideas:*

- Watch the how-to video for this project at [www.scenearama.com](http://www.scenearama.com).
- This kit can be easily adapted for sharing supplies in larger groups working around one table.
- Ask some of your students' parents to volunteer to help during the project.
- Have the students read their guides first before doing their project, so they can see how the project will go together (each step of the **Teacher Guide** corresponds with the **Student Guide**).

After the project has ended, make copies of the Creative Mask Certificate (inside back cover) and fill in students' name. It gives them a reminder of the work they have accomplished and the lessons they have learned.

**CREATIVE MASK KIT CONTENTS**

12 Project Bases\* with Labels

Teacher and Student Guide with Easel Template

12 Paintbrushes (large)  
12 Paintbrushes (small)

12 Plaster Cloth Rolls†

12 Construction Boards (8"x10")

12 Plastic Cups

12 Easel Boards (4 1/4"x11")

Project Glue†

24 Project Paints† (12 colors)

†Non-Toxic. We recommend you do not apply Plaster Cloth directly to skin as it may cause irritation.  
\*Patent Pending (Base)

Conforms to Health Requirements of ASTM D4236  
Made in USA of US and Imported Parts

**Kit contents are highlighted in text for easy identification.**

**ADDITIONAL SUPPLIES**

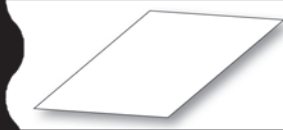
- Water (approx. 5 cups per mask)
- Newspapers (10 full-sized sheets per mask)
- Masking Tape (approx. 9' per mask)
- Scissors (one per mask)
- Markers (for labeling)
- Paper Towel Rolls for cleanup (2)
- Table Covering (can be newspapers)
- Measuring Spoons (1 teaspoon and 1/2 teaspoon)
- Ruler (one per mask)
- Decorations (feathers, beads, ribbon, etc.)
- Straws, sticks, pencils or rolled up paper (for options in Session 2)
- Disposable Cup with water (for rinsing **Paintbrushes**)

# DESIGN MASK



Allow approximately 60 minutes.

**CONTENTS**



**QUANTITIES PER MASK**

- 1 Construction Board (8"x10")

**ADDITIONAL SUPPLIES**

- Masking Tape (approx. 9' per mask)
- Newspapers (10 full-sized sheets per mask)
- Scissors (one per mask)

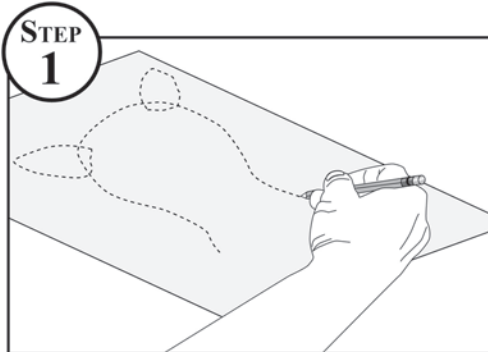
**Mask Options:** Decide what kind of mask to make. Use these ideas, or vary the shapes and newspaper wads to create your own design.

<p><b>Face</b></p>	<p><b>Animal</b></p>	<p><b>Masquerade</b></p>	<p><b>Creative Shape</b></p>
--------------------	----------------------	--------------------------	------------------------------

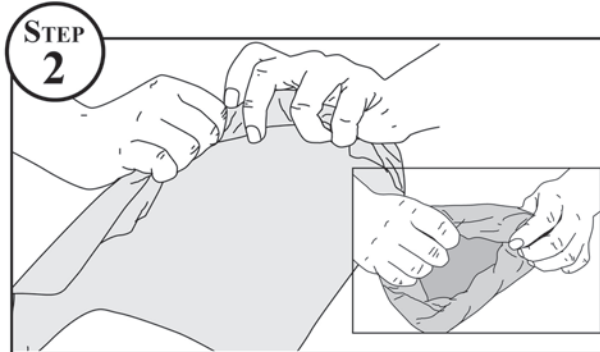
**PREP WORK**

- Distribute 10 full-sized sheets of newspaper per mask.

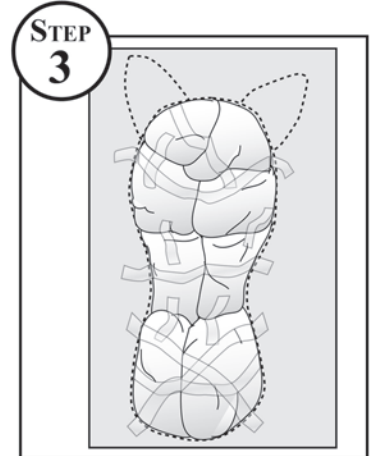
**INSTRUCTIONS**



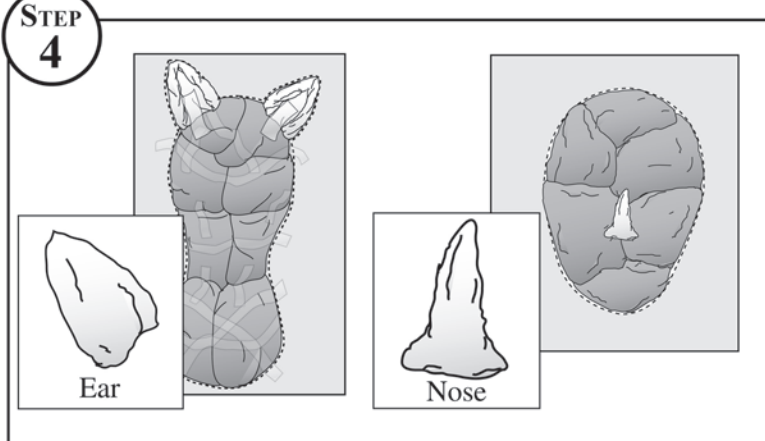
Draw outline of mask on **Construction Board**.



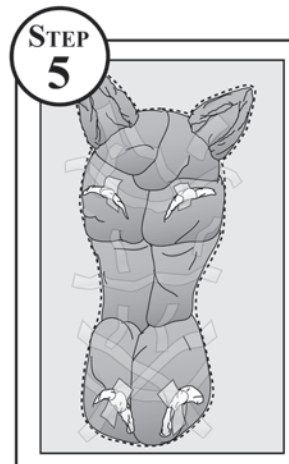
Tear a single sheet of newspaper in half. Wad newspaper by rolling edges under and toward the middle, creating a smooth outer surface.



Place wads inside the outline and tape to **Construction Board**.



Tear smaller pieces of newspaper, wad as indicated in Step 2, to form noses and ears. Tape wads in place.



Tear small strips of newspaper and roll into log shapes for eyebrows, lips, etc. then tape in place.



# BUILD MASK

Allow approximately 60 minutes.

## CONTENTS



• 1 Project Base

## QUANTITIES PER MASK



• 1 roll Plaster Cloth (cut into 3" strips)

## ADDITIONAL SUPPLIES

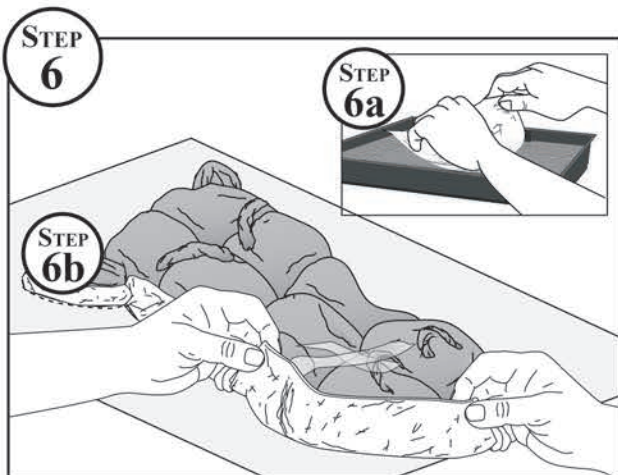
- Scissors (one per mask)
- Water (five cups per mask)
- OPTIONAL:**
- Straws, sticks, pencils or rolled-up paper (for nose and ear openings)

## PREP WORK

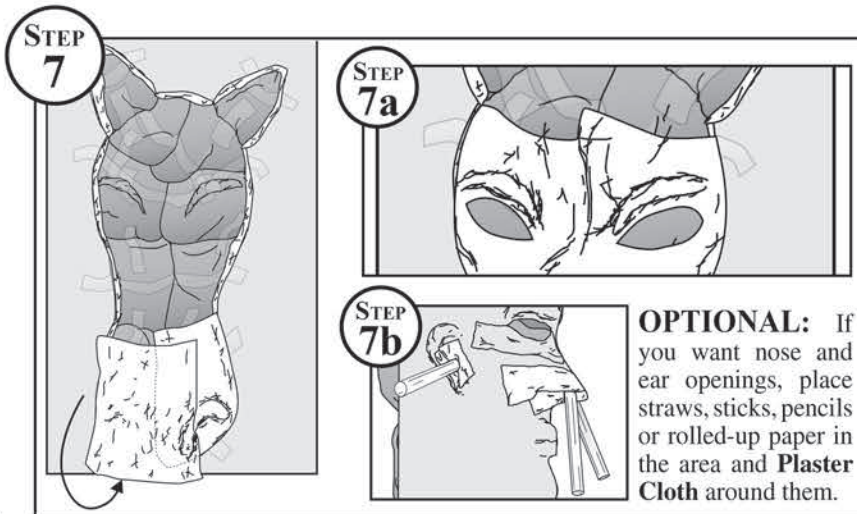
- Cut **Plaster Cloth** into approximately 3" x 8" strips. Be sure to keep the **Plaster Cloth** dry until use.
- Put 1" of water (approximately five cups) in **Project Bases**.

**NOTE:** When finished with water in Session 2, let sediment from **Plaster Cloth** settle. Pour water off and throw sediment in a trash can.

## INSTRUCTIONS



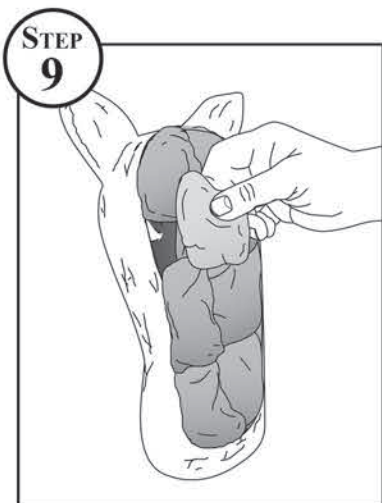
Fold strips of **Plaster Cloth** in half lengthwise, bumpy-side-out. Hold strips tightly by corners and drag through water (Step 6a). Wrap the wet **Plaster Cloth** around the side of the mask. Form and smooth with fingers (Step 6b).



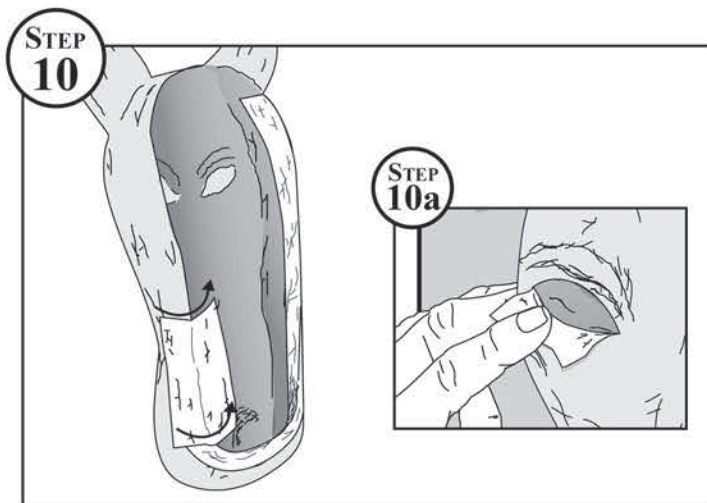
Lay **Plaster Cloth** strips, bumpy-side-up over remaining areas of mask. Smooth with wet fingers to fill in the holes. Do not apply **Plaster Cloth** over areas where you want eye and mouth openings (Step 7a). If you want nose and ear openings, refer to Step 7b.



Lay the rest of the wet strips overlapping the previous strip by 50% until the mask is covered by two layers. Allow to dry until set.



Carefully remove **Construction Board**, newspaper wads, straws and sticks, etc. at this time.



Add a third layer of **Plaster Cloth** over mask, making sure to wrap all edges with **Plaster Cloth** for reinforcement. Add extra **Plaster Cloth** around the openings of the eyes, nose and mouth to reinforce (Step 10a). Dry overnight.

# PAINT AND DISPLAY MASK

Allow approximately 60 minutes.

**CONTENTS**

- 1 Project Base and Label



**QUANTITIES PER MASK**

- 1 1/2 tsp Project Glue

- Paintbrushes (1 large, 1 small)

- 1 Plastic Cup

- 2 Project Paints

**ADDITIONAL SUPPLIES**

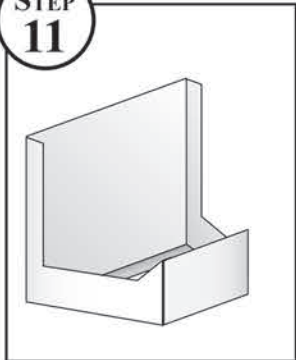
- Decorations of choice: feathers, beads, ribbon, buttons, colored yarn, sequins, glitter, rhinestones, leather, etc.
- Markers
- Scissors
- Measuring Spoons (1 tsp and 1/2 tsp)
- Disposable Cup with water (for rinsing Paintbrushes)

**PREP WORK**

- Each mask gets two different color **Project Paints** and two **Paintbrushes**.
- Put 1 1/2 tsp of **Project Glue** in a **Plastic Cup** (one per mask).

**INSTRUCTIONS**

**STEP 11**

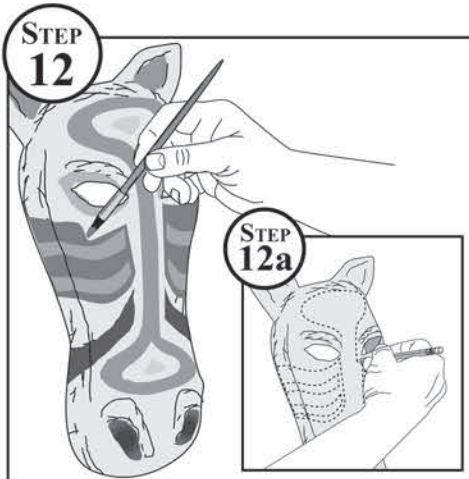


The Easel can be made now (see Easel Assembly on the following page for instructions).

**DISPLAY OPTIONS:**

Glue mask to top of **Project Base** without Easel or on inside to be used as a shadowbox (see illustrations in Step 15).

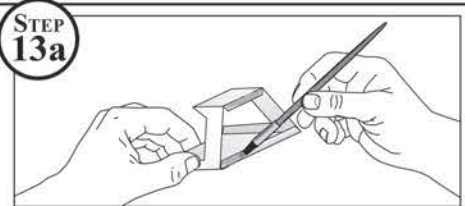
**STEP 12**



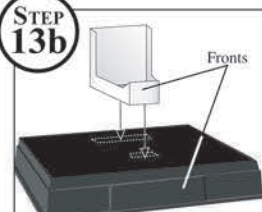
Paint the mask your choice of colors. Remember, you can use the **Plastic Cup** to blend paints for unique colors. Draw designs on the mask with a pencil before painting, if desired (Step 11a). After painting, clean and dry **Paintbrushes**.

**STEP 13**

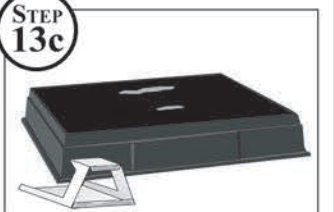
**STEP 13a**



**STEP 13b**

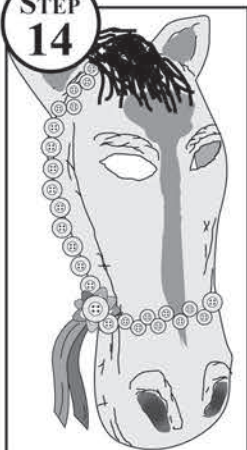


**STEP 13c**



Brush glue on Easel tabs (Step 13a). Place Easel onto **Project Base** in center, facing forward (Step 13b). Remove and lay Easel on side (Step 13c). Wait until glue is tacky (10 minutes), then place Easel back onto **Project Base** in same position and press together.

**STEP 14**



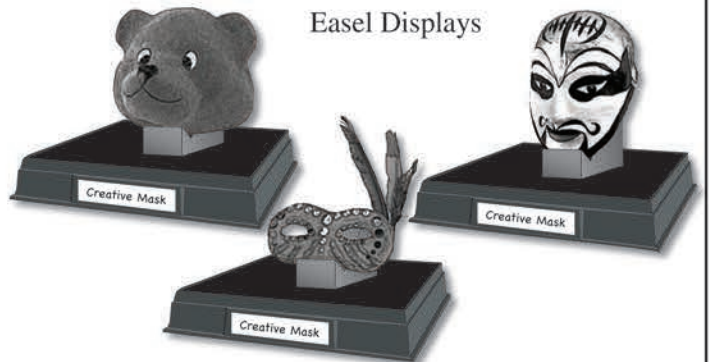
Embellish your mask with any kind of decoration.

**STEP 15**



Optional Display

**Easel Displays**



Glue mask to Easel (optional). Decorate **Project Label**, on shiny side, with markers and attach it to the front of the **Project Base**.

# EASEL ASSEMBLY

## CONTENTS

### QUANTITIES PER EASEL

- 1 Easel Board (4 1/4" x 11")
- 1 Paintbrush (large)
- 1 tsp Project Glue
- 1 Easel Template

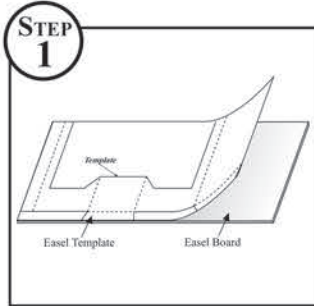
## ADDITIONAL SUPPLIES

- Measuring Spoon (1 tsp)
- Scissors (one per Easel)
- Ruler (one per Easel)

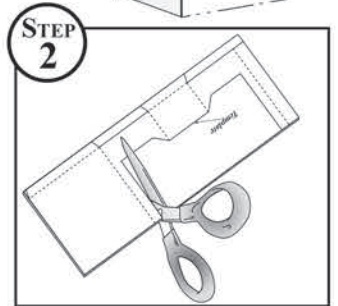
## PREP WORK

- Make a copy of this page, one for each mask.
- Put 1 tsp **Project Glue** on scrap paper.

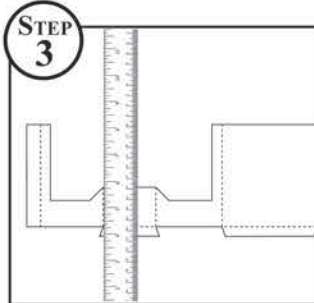
## INSTRUCTIONS



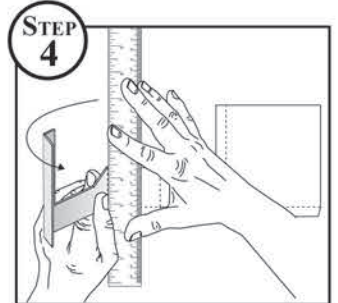
Lay **Easel Board** flat on workspace, brush on glue, and lay template on top. Allow to dry.



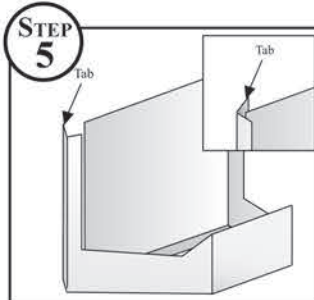
Cut **Easel Template** on solid lines.



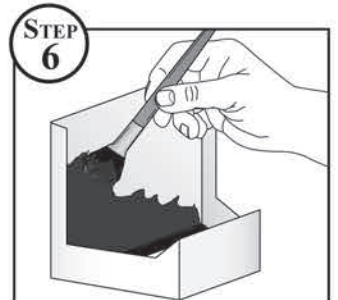
Place a ruler along the dotted lines.



Fold sides and tabs of Easel inward on dotted lines to create the corners.



Brush glue on the inside of tab to join edges of Easel.



**OPTIONAL:** Paint Easel any color, inside and out.

**NOTE:** Trim Easel if necessary to accommodate your project.

Cut

Cut

Easel Template

Template

# Scene-A-Rama Class Project

## CERTIFICATE OF COMPLETION

This is to certify that

\_\_\_\_\_ *Name of student*

completed the Scene-A-Rama classroom project

## CREATIVE MASK

on \_\_\_\_\_

*Date*

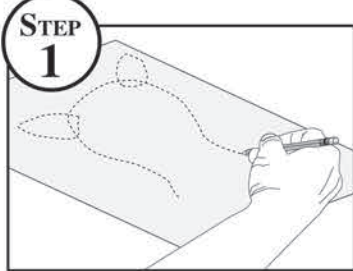
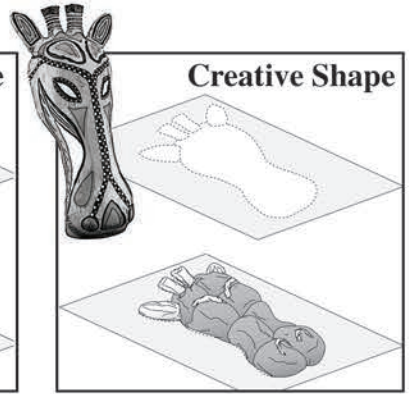
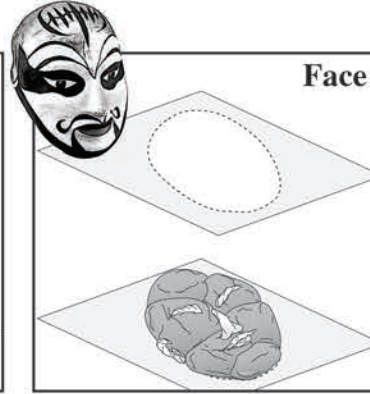
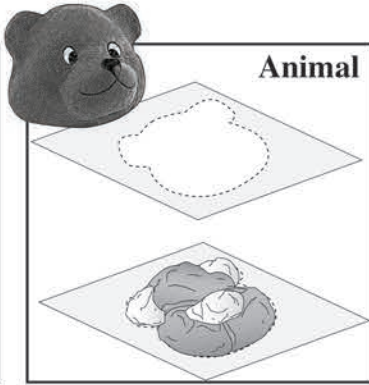
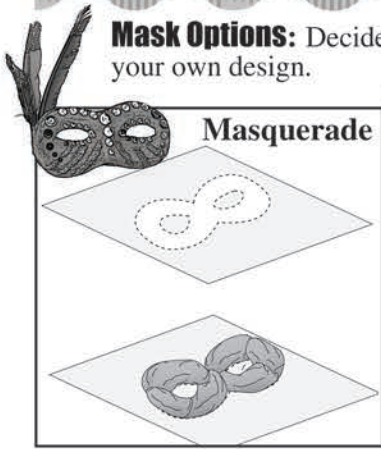
\_\_\_\_\_ *Teacher*

A division of Woodland Scenics®

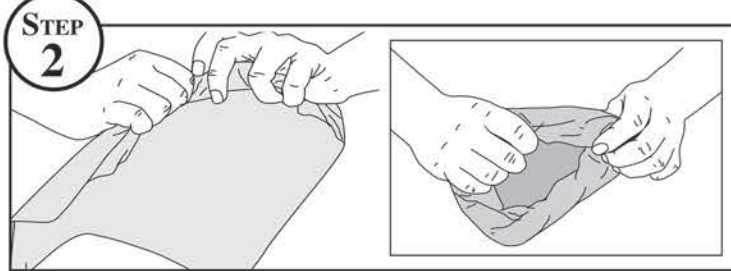
**SCENE-A-RAMA**  
DIORAMAS • SCHOOL PROJECTS • DISPLAYS

See the complete line of products and exciting how-to videos at [www.scenearama.com](http://www.scenearama.com).

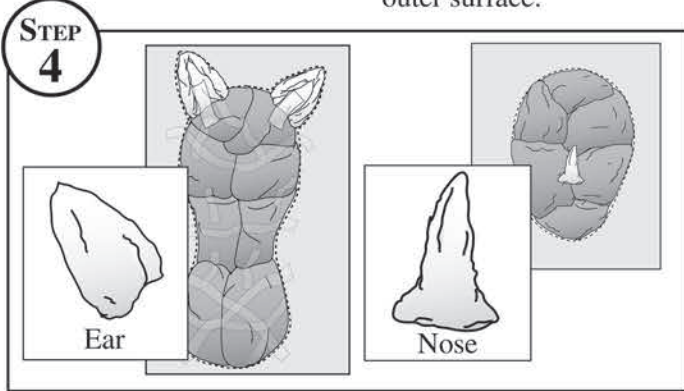
**Mask Options:** Decide what kind of mask to make. Use these ideas, or vary the shapes and newspaper wads to create your own design.



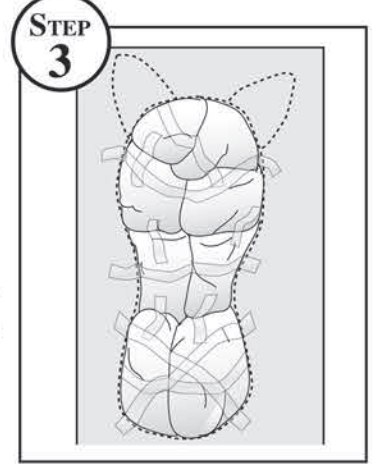
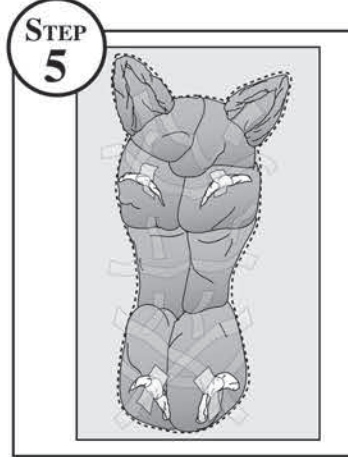
Draw outline of mask on **Construction Board**.



Tear a single sheet of newspaper in half. Wad newspaper by rolling edges under and toward the middle, creating a smooth outer surface.



Tear smaller pieces of newspaper, wad as indicated in Step 2, to form nose and ears. Tape wads in place.

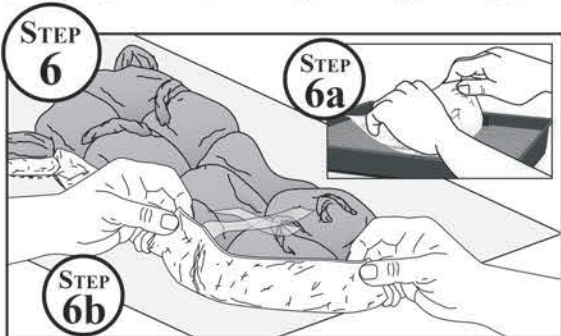


Place wads inside the outline and tape to **Construction Board**.

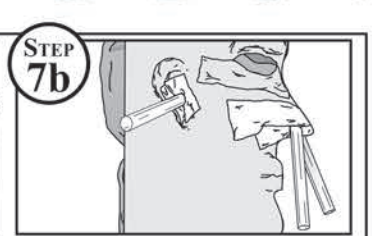
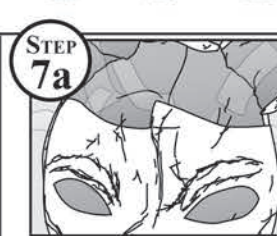
Tear small strips of newspaper and roll into log shapes for eyebrows, lips, etc. then tape in place.

BUILD MASK

SESSION 2



Fold strips of **Plaster Cloth** in half lengthwise, bumpy-side-out. Hold strips tightly by corners and drag through water (Step 6a). Wrap the wet **Plaster Cloth** around the side of the mask. Form and smooth with fingers (Step 6b).



**OPTIONAL:** If you want nose and ear openings, place straws, sticks, pencils or rolled-up paper in the area and **Plaster Cloth** around them.

Lay **Plaster Cloth** strips, bumpy-side-up over remaining areas of mask. Smooth with wet fingers to fill in the holes. Do not apply **Plaster Cloth** over areas where you want eye and mouth openings (Step 7a). If you want nose and ear openings, refer to Step 7b.

# BUILD MASK continued

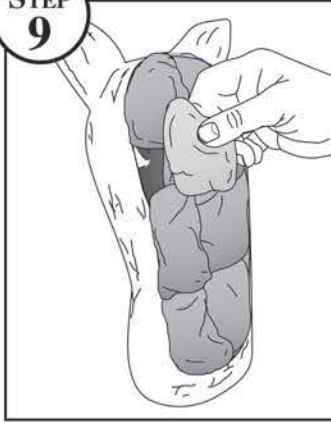
SESSION **2**

STEP 8



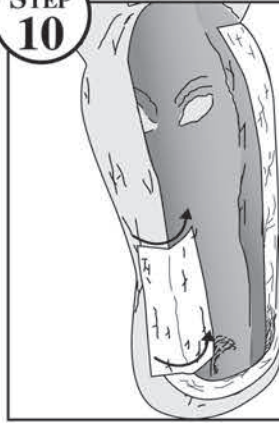
Lay the rest of the wet strips overlapping the previous strip by 50% until the mask is covered by two layers. Allow to dry until set.

STEP 9



Carefully remove **Construction Board**, newspaper wads, straws and sticks, etc. at this time.

STEP 10



STEP 10a

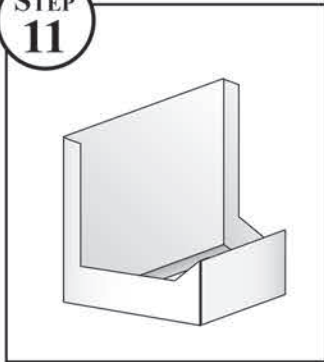


Add a third layer of **Plaster Cloth** over mask, making sure to wrap all edges with **Plaster Cloth** for reinforcement. Add extra **Plaster Cloth** around the openings of the eyes, nose and mouth to reinforce (Step 10a). Dry overnight.

# PAINT AND DISPLAY MASK

SESSION **3**

STEP 11

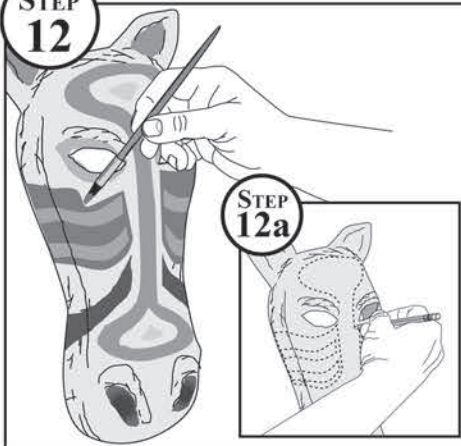


The Easel can be made now.

### DISPLAY OPTIONS:

Glue mask to top of **Project Base** without Easel or on inside to be used as a shadowbox (see illustrations in Step 15).

STEP 12



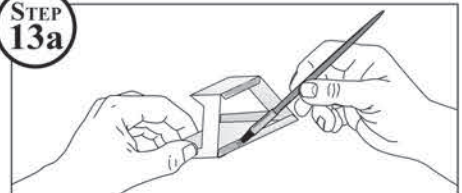
STEP 12a



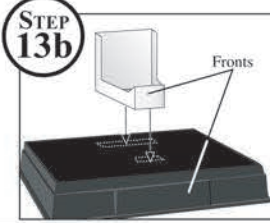
Paint the mask your choice of colors. Remember, you can use the **Plastic Cup** to blend paints for unique colors. Draw designs on the mask with a pencil before painting, if desired (Step 11a). After painting, clean and dry **Paint-brushes**.

STEP 13

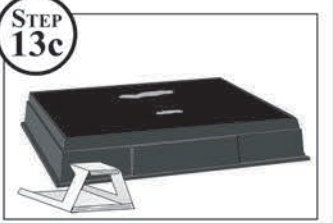
STEP 13a



STEP 13b

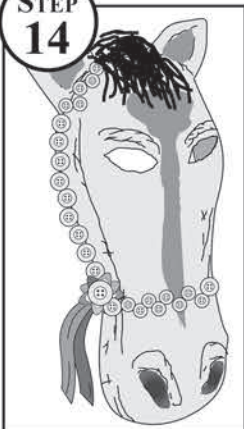


STEP 13c



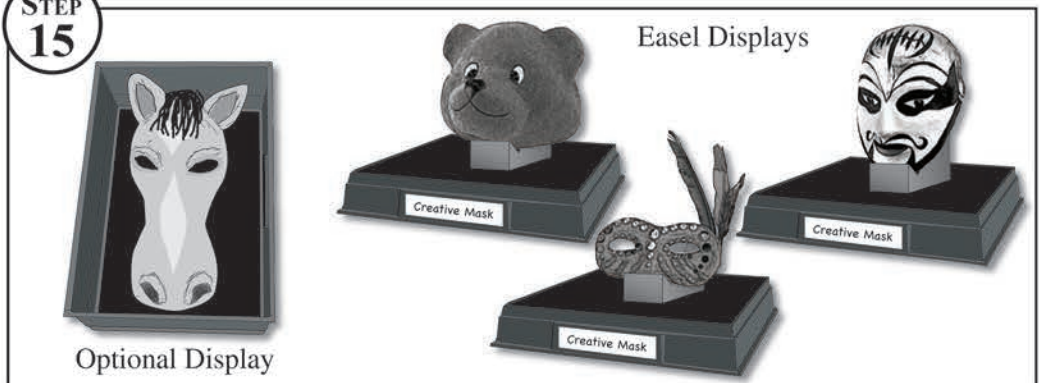
Brush glue on Easel tabs (Step 13a). Place Easel onto **Project Base** in center, facing forward (Step 13b). Remove and lay Easel on side (Step 13c). Wait until glue is tacky (10 minutes), then place Easel back onto **Project Base** in same position and press together.

STEP 14



Embellish your mask with any kind of decoration.

STEP 15



Optional Display

Glue mask to Easel (optional). Decorate **Project Label**, on shiny side, with markers and attach it to the front of the **Project Base**.